



Groupe ER2i

Your key partner to handle with success your medical devices and clean processes implementation projects

Our core fields of activity

Processes and facilities

- Clean facilities (water, steam, gases...)
- Injection handling
- Metal works handling
- Clean flow management, layouts, flows interfaces
- Interfacing production / clean spaces / packaging

Clean rooms & controlled environments

- Regulatory compliance (GMPs, EN 14971, EN ISO 13485)
- Containment chambers, local protections
- Implementation of your production area
- Fitting cleanliness to your process
- Computational Fluids Dynamics (CFD approach)
- Predictive design, risk assessment
- Qualification, validation QC/QI/QO/QP

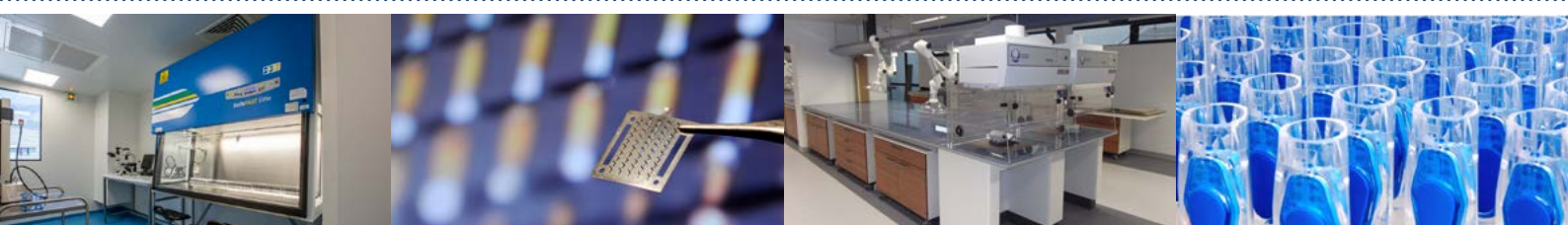
Buildings and on site management

- Structure and building engineering
- 3D BIM Model for enhanced and realistic design
- Energy wise design
- On site works and schedule management

Our mission

Our mission is to ensure starting by your production process to design and set up the facilities, the containment, the building & technical parts and all arrangements fulfilling your processes, regulations, ergonomy and quality.

MEDTECH • MEDICAL DEVICES



Some references

Redevelopment and revaluation of pharmaceutical production areas

14,5 M€ of works - 7 000 m² - Isère (38) - Private



- **Pre-programming and feasibility study:**
Valorization and reconfiguration of clean spaces.
- **HVAC Diagnosis – Extension of quality control laboratory** (Clean Room Grade C GMP).
- Simulation, optimization and qualification.
- **Creation of a clean room dedicated** to syringes production.
- **Construction of a production site in Hungary:** 5000 m² of Clean Rooms - syringes production.

**EPCM • Technical engineering and site supervision
Scheduling, Piloting, Coordinating • Quantity surveying**

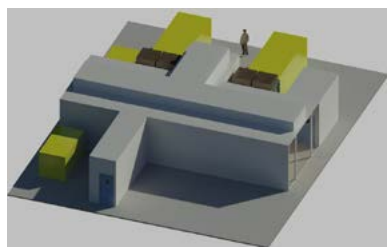
Extension and rehabilitation of pharmaceutical buildings and laboratories

25 M€ of works - 10 000 m² - Haute-Savoie (74) - Private



- **Creation of 2 extensions:** 6700 m² of ISO 6-7-8 clean rooms. **Administrative and offices premises, 2 100 m² clean packaging line and monitored storage.**
- Creation and development of biological R&D laboratories L1/L2.
- Junction construction work on running site while providing uninterrupted services.
- Process and inactivation treatment of production waste.
- Design of high-rise storage warehouses.
- Pharmaceutical Storage.

**EPCM • Technical engineering and site supervision
Scheduling, Piloting, Coordinating • Quantity surveying**



www.groupe-er2i.com

Bâtiment Synergy – ZAC Isiparc
38330 Saint-Ismier

Tél. : 04 76 98 31 82 - Fax : 04 76 33 97 52 - E-mail : contact@groupe-er2i.fr